



Dear Councillor

We have been engaged to make a planning application on behalf of Emotion Shaping Energy in respect of a 15.2MW solar farm at Church Farm, Oulton, Norfolk

The development will consist of rows of PV panels mounted on frames (please see example and drawing). Further details are available at [www.emotionenergy.co.uk](http://www.emotionenergy.co.uk)

Whilst we know you will be consulted formally through the planning process we would welcome your comments prior to our planning submission and look forward from hearing from you soon.

If you have any questions please contact either Jane Hunting or Sam Jones on 01603 611323 [jane.hunting@richardpike.co.uk](mailto:jane.hunting@richardpike.co.uk) or [sam.jones@richardpike.co.uk](mailto:sam.jones@richardpike.co.uk)

Richard Pike Associates  
4 Netherconesford  
93-95 King Street  
Norwich  
NR1 1PW



The Government is urging the increased generation of renewable energy through a variety of project, one being PV (Photo-Voltaic) Solar Farms.

We are promoting such a development at Church Farm, Oulton on behalf of Emotion Shaping Energy (ESE).

This is one of a number ESE are hoping to develop in the next 9 months, and we will be submitting planning applications shortly.

The attached documents show a "Google Earth" image showing the site, a draft layout that would accompany the planning application, and photographs of sites elsewhere together with drawings that indicate the scale of the development.

The panels are approximately 2 metres x 1 metre and are attached to frames which in turn attach to pile-driven posts. They are sloped to about 25 degrees, and will be placed in "landscape" form with 4 panels from top to bottom.

The maximum height is 2.6m and rows 5.8m apart

The ground between the rows will be grassed with a wildflower mix to encourage nectar loving insects and seed feeding birds. Some land owners may decide to graze sheep on the land for maintenance.

We have asked Norfolk Wildlife Services to prepare an ecological report on all of the sites and will be including management and maintenance requirements of each site in the lease with the landowner.

Each site is fenced with a 2 metre chain link fence or similar to assist in security, and to prevent deer entering the site.

The construction time is expected to be 6-10 weeks, during which the materials will be delivered to site by 40 tonne container vehicles and other smaller vehicles.

The piling of the posts is expected to take about the first 2 weeks of the project.

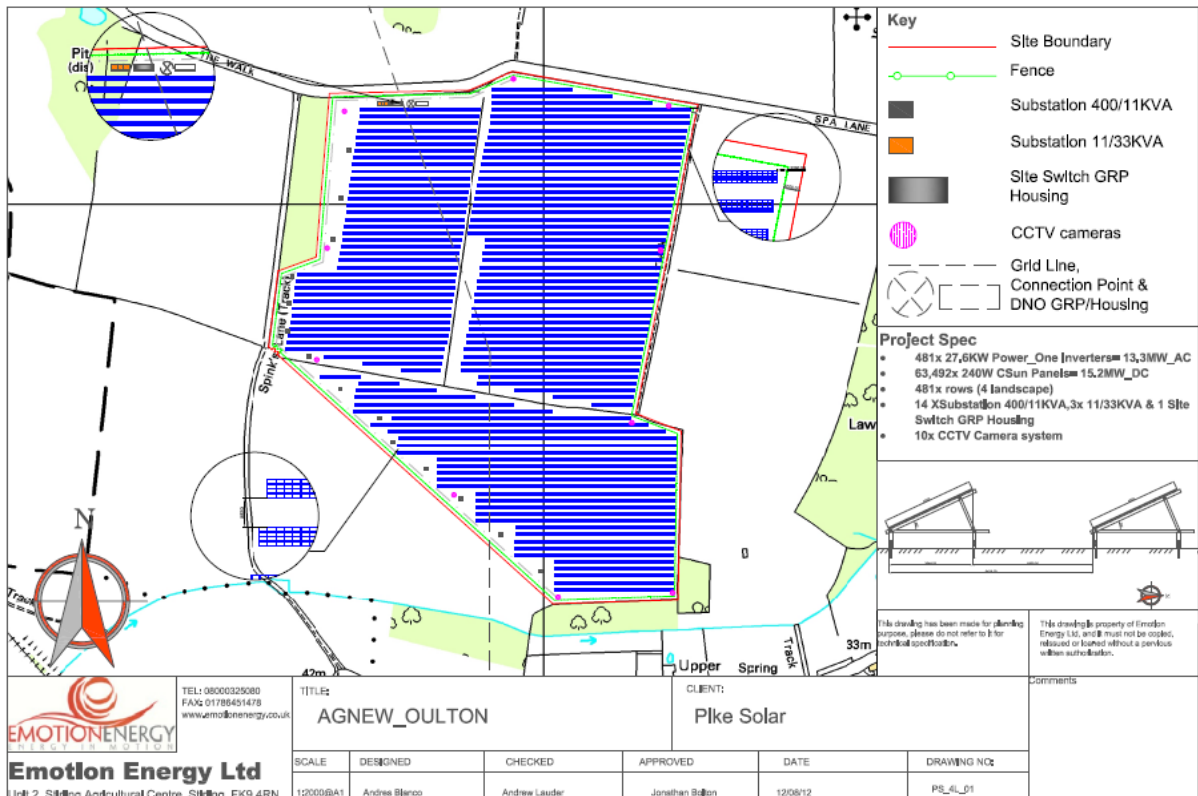
After the site is completed, regular inspection and maintenance would be carried out by an engineer in a small van.

The plan is for the lease to run for 30 years, after which the site may be decommissioned and if appropriate could be returned to agriculture, and the materials from the site recycled.

**GOOGLE EARTH**



**LAYOUT PLAN**





**SOLAR FARM EXAMPLE - CARLTON FARM, NORTH WALSHAM**  
(note:- panels in portrait orientation)

